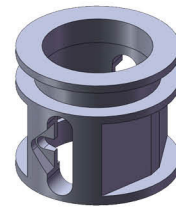
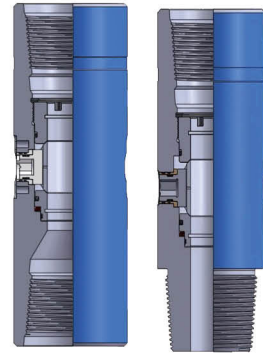
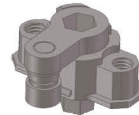




IBOP for top drive can be divided into Upper IBOP and Lower IBOP; they are control valves which are used with the top drive system. Usually the two valves connected to the top drive drilling device. The IBOP adopts high reliable metal seal. So it can bear high pressure upward and downward. The working pressure can be achieved 10000 psi or 15000 psi. When well kick occurring, the upper IBOP can be closed by remote controlled, but the lower IBOP will be closed manually. Actuator for top drive is a subsidiary body which controls open and close of Upper IBOP. It works with other accessories of the rig, so as to control opening and closing of Upper IBOP on any height of derrick driller console. Both the valve body cavity and accessories have special anticorrosive processing, so that prolong the service life.



Actuator



Crank

Technical Specification

Model	OD	ID	OAL	Connection
	mm (inch)	mm (inch)	mm (inch)	
J03M	187 (7-23/64)	78 (3-5/64)	572 (22-33/64)	6-5/8 REG
J03J	187 (7-23/64)	78 (3-5/64)	523 (20-19/32)	6-5/8 REG
SNXS187-3C	187 (7-23/64)	76.2 (3)	572 (22-33/64)	6-5/8 REG
SNXS187-4	187 (7-23/64)	76.2 (3)	523 (20-19/32)	6-5/8 REG
SNXS187-9	187 (7-23/64)	78 (3-5/64)	523 (20-19/32)	6-5/8 REG
SNXS187-10	187 (7-23/64)	78 (3-5/64)	572 (22-33/64)	6-5/8 REG
SNXS190-1	190 (7-31/64)	76.2 (3)	547 (21-17/32)	6-5/8 REG
SNXS197-5C	197 (7-3/4)	76.2 (3)	572 (22-33/64)	6-5/8 REG
SNXS197-6B	197 (7-3/4)	76.2 (3)	523(20-19/32)	6-5/8 REG
SNXS197-3	197 (7-3/4)	78 (3-5/64)	584 (23)	6-5/8 REG
SNXS197-4	197 (7-3/4)	78 (3-5/64)	512 (20-5/32)	6-5/8 REG
SNXS200-2	200 (7-7/8)	76.2 (3)	547 (21-17/32)	6-5/8 REG
SNXS216-1	216 (8-1/2)	78 (3-5/64)	600 (23-5/8)	7-5/8 REG
SNXS216-2	216 (8-1/2)	78 (3-5/64)	533 (20-63/64)	7-5/8 REG
SNXS216-4	216 (8-1/2)	76.2 (3)	603 (23-47/64)	7-5/8 REG
DX254-3	254 (10)	105 (4-1/8)	596 (23-15/32)	8-5/8 REG